

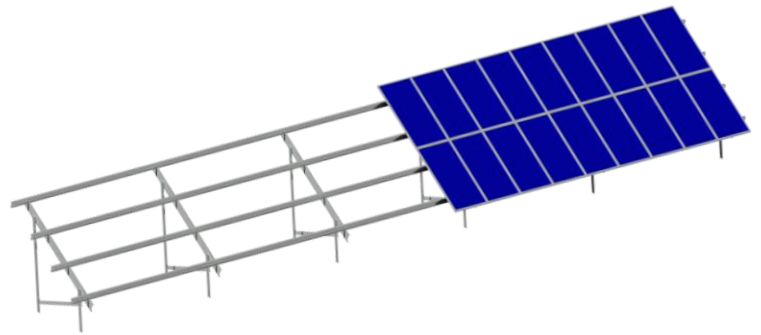
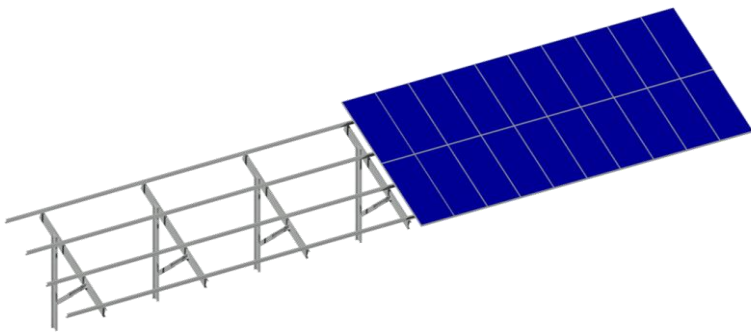


Technical
Datasheet

FIXED STRUCTURES FOR PHOTOVOLTAIC INSTALLATIONS ST-FJ

Monopole

Bipole



 **STANSOL**[®]
photovoltaic solutions

Structures for photovoltaic installations

www.stansolgroup.com

Headquarters Spain
Avda. de los Huetos 79
Vitoria 01010

☎ (+34) 945 710 118
✉ info@stansolgroup.com

STANSOL ENERGY designs, supplies and installs fixed structures considering the reference regulations of the projects, as well as the particular specifications of our clients. Each solution is custom-designed in order to optimize the best solutions for our clients.

COMPETITIVE ADVANTAGES

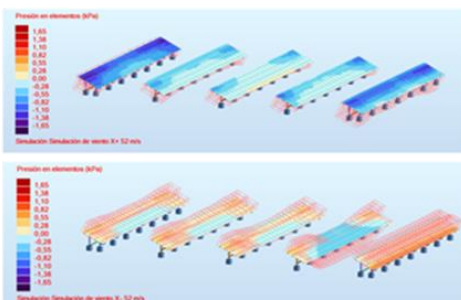
- Optimization by projects according to the quantities of materials needed, manufacturing processes and optimal for the assembly
- High adaptability to the land not encountering problems linked to the orography of the environment
- Versatility in the configuration of the solar modules.
- Shadows study
- We minimize the interaction points with the ground
- Considerable reduction in the number of piles/foundations
- Economically efficient solution
- Easy and fast assembly
- High durability
- Resistant to extreme environmental conditions
- Optimization according to our customer requirements

MAIN FEATURES

Fixed structures	Monopole/Bipole
Módulo configuration	Horizontal (3H-4H)/Vertical (2V-3V)
Structure configuration	No limitations, according to the most suitable solution for clients
Foundation options	Directly driven/Pre-drilling + Pile/Screw
Adaptability to the land	N-S no limitations /E-O up 20º slope. For higher slopes, other solutions
Profiles	High resistance steel S280GD-S350GD Z200 – Z275 Magnelis
Screws	10.9 GV
Modules fixation	Aluminum + screws 8.8 Inox
Modules types	60/72 cells
Environmental conditions	According to local regulations+ Project requirements
Assembly	100% screwed unions, no cuts or complementary drills on site
Maintenance	Minimum

WARRANTY

Anticorrosion protection	25 years
--------------------------	----------



SERVICES

Design	Maintenance
Supply	Warranty
Installation	Pull out test



Structures for photovoltaic installations

www.stansolgroup.com